

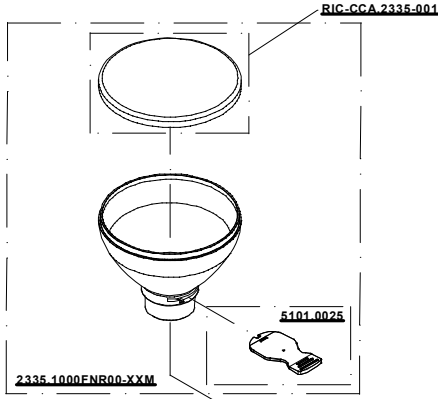
1

2

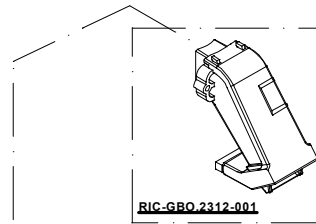
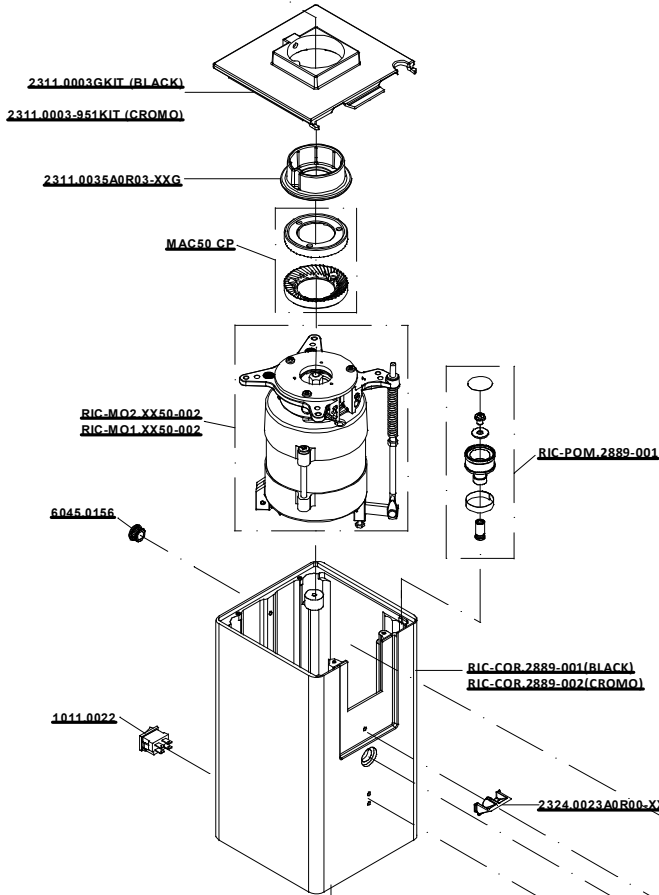
A

B

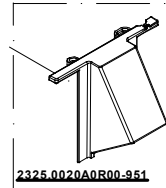
C



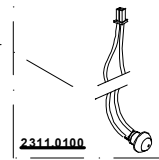
**ESPLOSO\_KUBE MILL\_LPV**  
**ESGR-2889-01v2413**  
 120V/60Hz  
 220-240V/50-60Hz



RIC-GBQ.2312-001



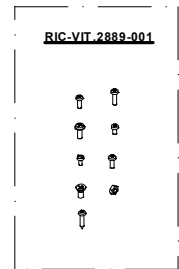
2325.0020A0R00-951



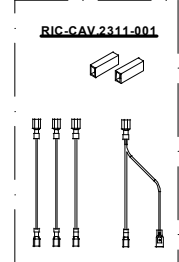
2311.0100



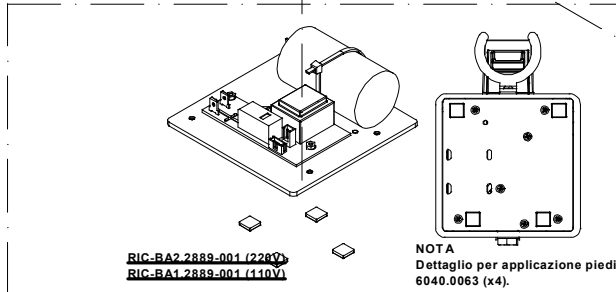
RIC-FOR.2318-001



RIC-VIT.2889-001



RIC-CAV.2311-001



RIC-BA2.2889-001 (228V)  
RIC-BA1.2889-001 (110V)

NOTA  
Dettaglio per applicazione piedini  
6040.0063 (x4).

1005.0240F5A G.B. - U.K.  
 1005.0225 SCHIUKO 1.2 mt  
 1005.0110 USA  
 1005.4220 SVIZZERA - SWITZERLAND  
 1005.1240 AUSTRALIA

N.B. : DOVE INDICATO CON "XXX" SI RICHIEDE DI SPECIFICARE IL COLORE  
PLEASE NOTE - WHERE "XXX" IS INDICATED YOU HAVE TO SPECIFY THE COLOUR

IL PRESENTE DISEGNO E' DI ESCLUSIVA PROPRIETA' DELLA DITTA LA PAVONI, QUALUNQUE CONTRAFFAZIONE O DIVULGAZIONE NON AUTORIZZATA SARA' PERSEGUIBILE A TERMINE DI LEGGE.



Via Privata Gorizia, 7  
20098 S.Giuliano Mil. MILANO

Rev. N° 0

11/04/2024

ESPLOSO NEW KUBE MILL

2880129

1

2

3

A

A

B

B

C

C

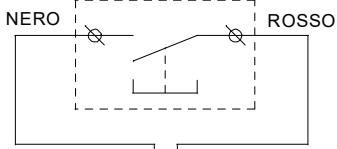
D

D

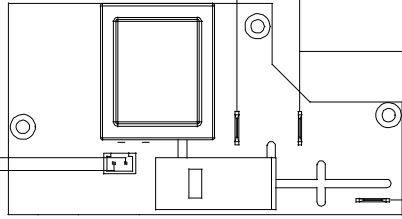
E

E

MICRO ATTIVAZIONE MACINATURA  
2311.0100M



SCHEDA ELETTRONICA  
PR-NPC-220



VITE SU CORPO



CAV80

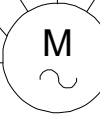
TERRA

MARRONE

NERO

TERRA

TERRA



MOTORE

8000.A20-ALW-R00

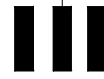
CELESTE

ROSSO

CONDENSATORE

1013.0010-WM

LINEA 220-240V 50-60Hz



6040.0033 (x2)

CAV79

CAV80

CAV79

CAV79

1

2

2A

1A

INTERRUTTORE  
1011.0022



Via Privata Gorizia, 7  
20098 S. Giuliano Mil. MILANO

Rev. N° 0

11/04/2024

SCHEMA EL. 220-240 V KUBE MILL

2870086

1

2

3

1

2

3

A

A

B

B

C

C

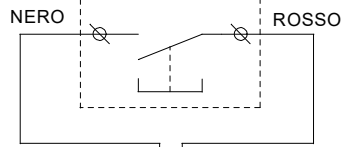
D

D

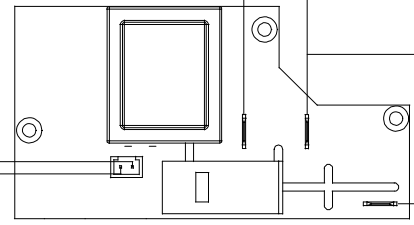
E

E

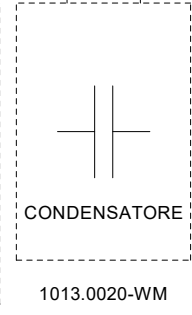
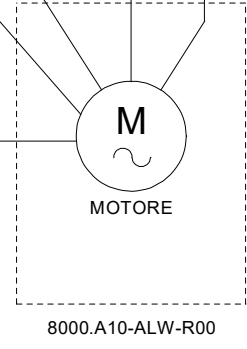
MICRO ATTIVAZIONE MACINATURA  
2311.0100M



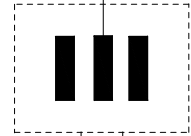
SCHEDA ELETTRONICA  
PR-NPC-110



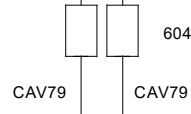
VITE SU CORPO



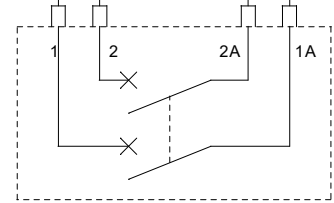
LINEA 110-120V 60Hz



6040.0033 (x2)



CAV79 CAV80



Via Privata Gorizia, 7  
20098 S.Giuliano Mil. MILANO

Rev. N° 0

11/04/2024

SCHEMA EL. 120 V KUBE MILL

2870087

1

2

3